



Become a smart city, today

[wise.town](http://wise.town)





Industry 4.0  
Big Data Analysis  
A.I.

GIS & Mapping  
Processes Automation



Internet  
of Things

**TEAMDEV**  
ECOSYSTEM

Agritech  
Remote Sensing



Smart City  
Solutions

Research & Innovation  
Training & Consulting



# International industrial research



Horizon Europe  
2021-2027



Farmtopia

DOME

Clever





# WiseTown

- 1** Integrated suite of applications within a unified Digital Twin Platform for data analysis, correlations, and simulations.
- 2** Modular and scalable infrastructure that makes the platform adaptable to both small and large municipalities.
- 3** Some modules are developed to encourage active citizen engagement in the decision-making process and in the care of the territory.



# Towards sustainable cities



Analysis and monitoring of the environment and climate change

Supporting a new citizen-centered urban planning

Designed to make cities inclusive and safe

The digitalization is a driving force behind the green transition of the cities



•data integration

## WiseTown Core DB

**The core database integrates open data from various sources:**

Satellite Data

National Statistical Institute

Regional Environmental Protection Agency

Weather

Other Open Data

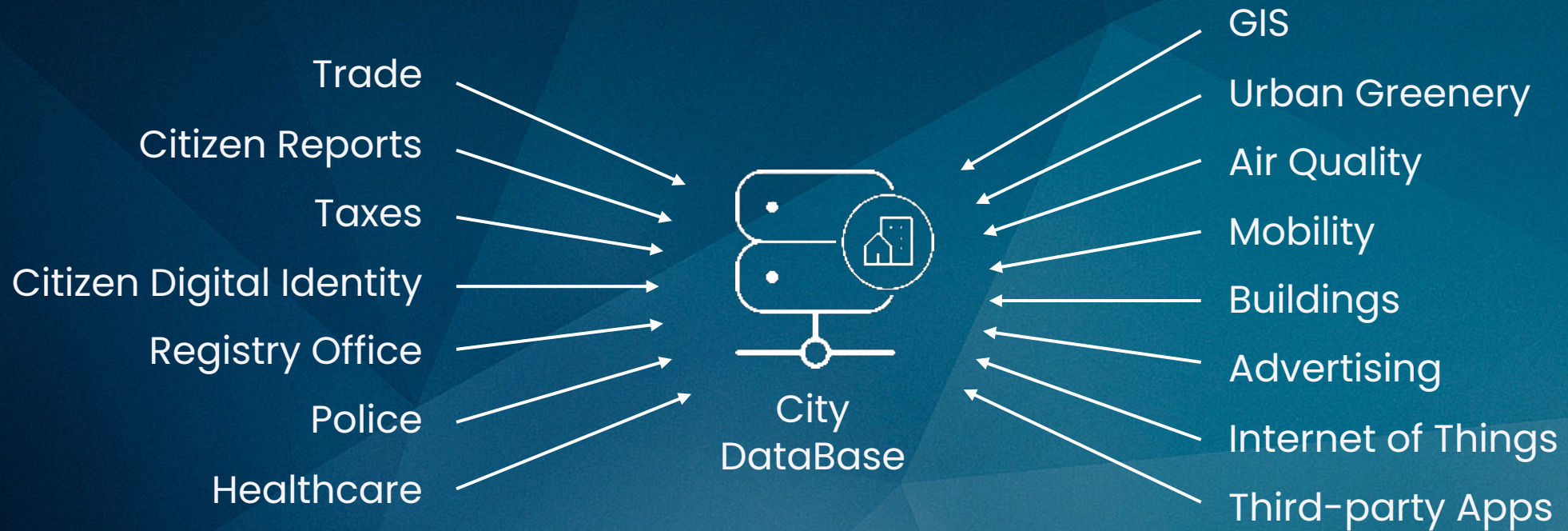
A large, light blue cloud shape containing the Wisetown logo. The logo consists of a stylized 'wi' with a red dot, a yellow dot, and a green circle above the 'i', and the word 'wisetown' in lowercase below it.

wisetown



•data integration

# City DataBase

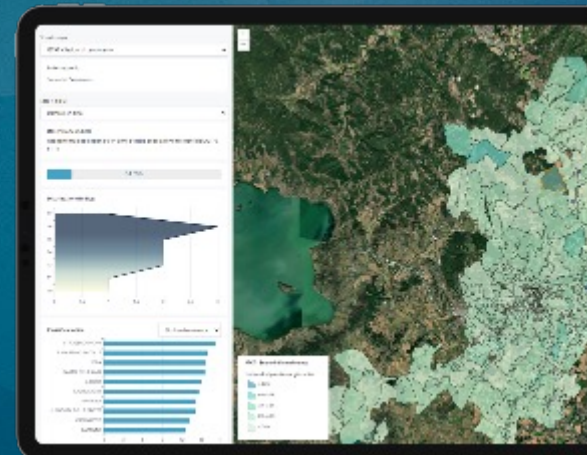
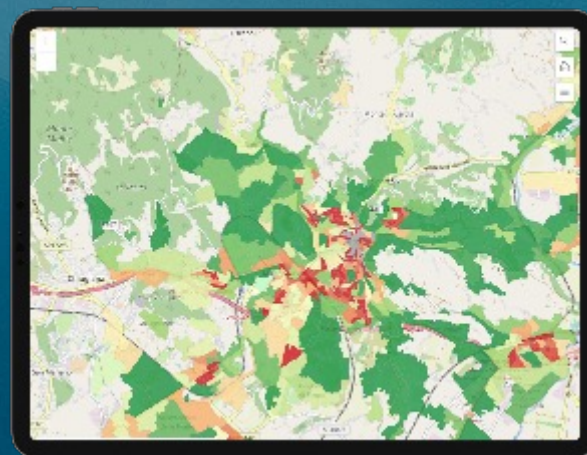
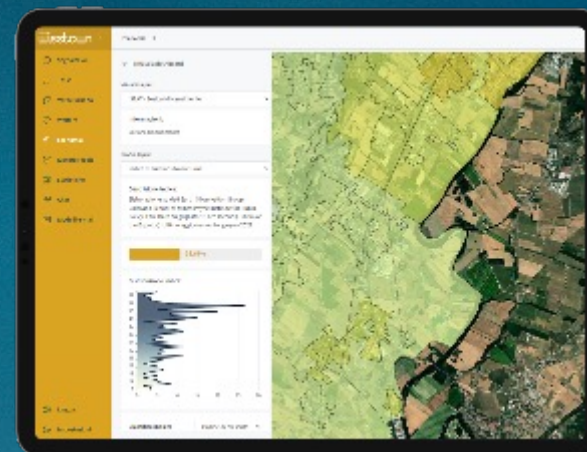
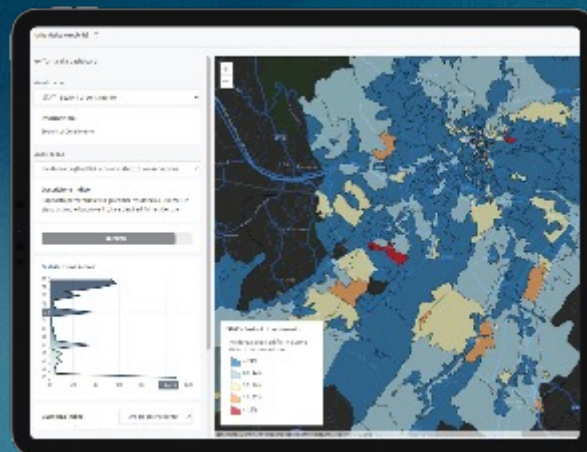




# Urban Dashboards

## Fields

- Urban greenery
- Urban planning and mobility
- Welfare
- Tourism
- Climate change

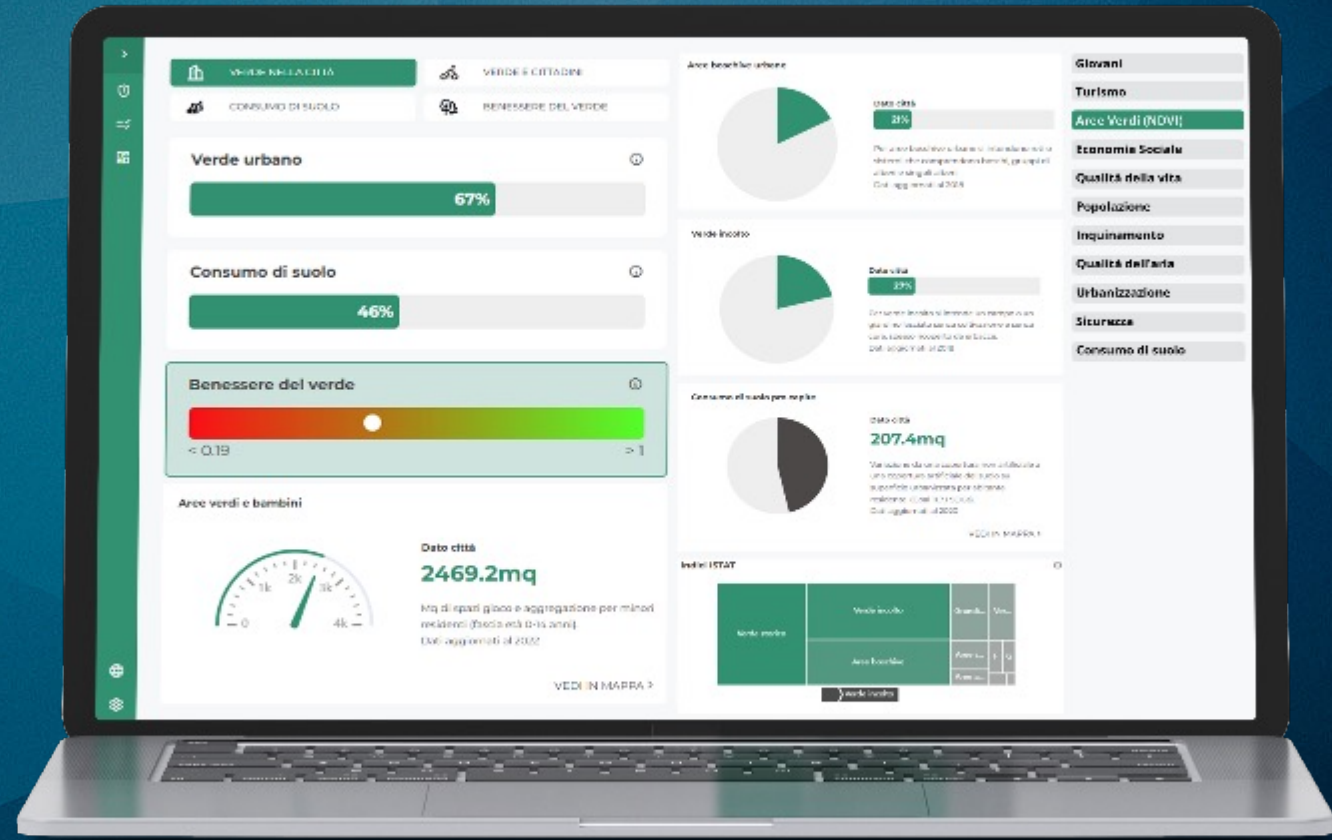




analysis & visualization

# Indexes & AI

- Youth
- Tourism
- Green Areas (NDVI)
- Social Economy
- Quality of Life
- Population
- Pollution
- Land Consumption
- Air Quality
- Security
- Urbanization

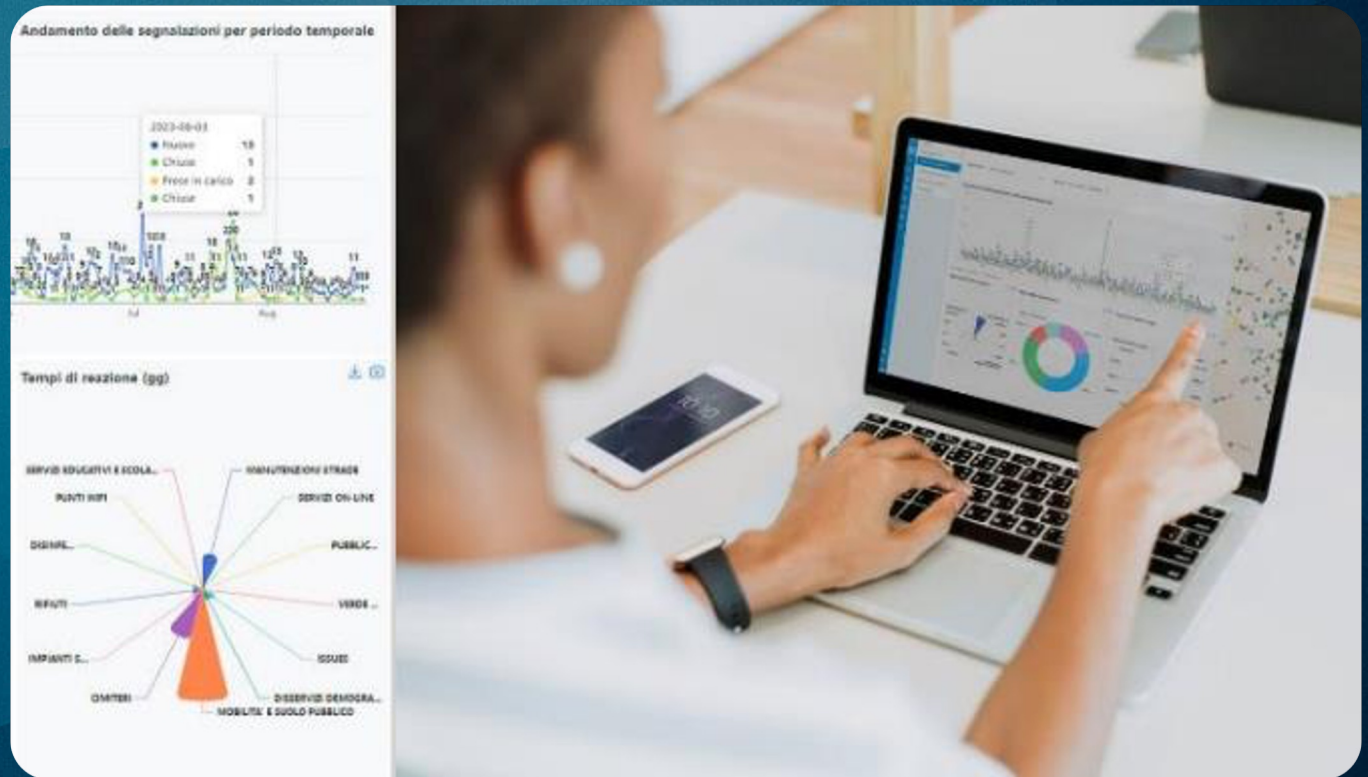




•reporting management

# Issue Manager<sup>®</sup>

- Collection and Monitoring of reports
- Harmonization of operational flows
- Management of internal processes
- Operational task assignment





•urban digital twin

# Citiverse

- Virtual representation of the city
- Simulation and analysis in risk-free virtual environments
- Decision support based on both truthful and accuracy
- Analysis of large volumes of geospatial data to identify patterns and trends





• participatory planning

## Crowd Planning<sup>®</sup>

WiseTown Crowd Planning is the technology that supports **participatory development**

- Easy sharing of projects
- Enhanced transparency
- Comprehensive insight into citizens' needs and demands





# Potential of the Digital Twin

The city seen through different perspectives

## Decision-makers

- Control Room and statistics
- Urban Dashboard
- Digital Twin 3D
- Sustainability indexes

## Operators

- Management of reports
- Urban planning
- Data collection
- Monitoring
- KPI sustainability

## Citizens

- App for Citizens
- Dashboard for citizens
- Multichannel communication
- KPI for virtuous behavior



# Municipality of Perugia



## What

Building a digital and interoperable infrastructure to optimize the city's administrative system.

## How

Geographic Information System: migration of over 50 modules into a single environment

Land survey campaigns using mobile mapping, drones, and georadar tools

Development of the city's digital twin for visualization, analysis, and simulations aimed at promoting data-driven governance



•Perugia



# PERUGIA DIGITAL TWIN





# Geographic Information System

Data transition to the ArcGIS platform



Demographics



Public lighting



Renewable sources



Acousting mapping



Urban planning



Radio-electric system



Cadastre



Perimeter office



Tax services



General urban development plan



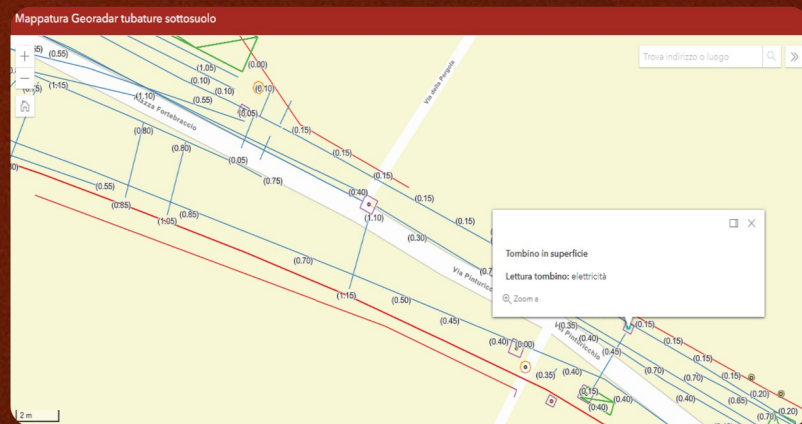
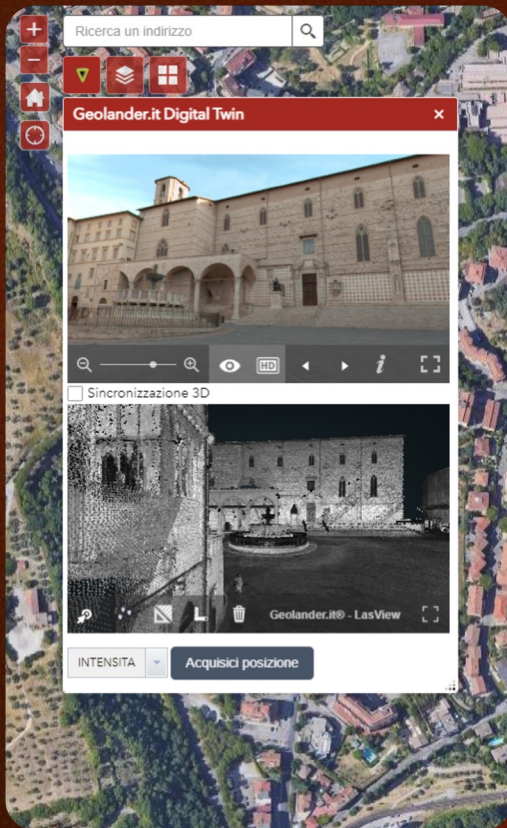
Greenery



Environment



# •Perugia



**310.000**  
High resolution  
images of Perugia



**613 GB**  
Point cloud size



**1.100 km**  
Mapped roads



**8 TB**  
Collected data



**5,2 km**  
Surveying using an  
electric scooter



# Perugia Digital Twin

- A realistic representation of the territory with activatable informative layers.
- Enables exploration of the virtual city, simulation of situations, and conducting queries.
- Provides real-time insight into the urban environment, including traffic data, parking availability, pollution levels, weather conditions, and many other data layers.





•use case

# Municipality of Parma



## What

The Parma Digital Twin project stems from Geolander.it's dedication to implementing initiatives in digital innovation and urban governance, closely collaborating with WiseTown.

## How

Land survey campaigns, construction of the 3D virtual model, and integration of municipal data into the model

Creation of advanced platforms and dashboards to enable meaningful correlations and analysis

Data democratization: integration, visualization, and analysis of data for all stakeholders



# Parma Digital Twin

- Based on a 2D or 3D model of the city, the system provides the capability to visualize and query urban data.
- Urban dashboards on green spaces and welfare for visualization and analysis of open data and municipal data
- For a comprehensive understanding of the city and effective decision-making





# •Parma



**396.734**  
High resolution  
images of Parma



**2.341.075.721**  
Point cloud size



**1.215 km**  
Mapped roads



**5 TB**  
Collected data

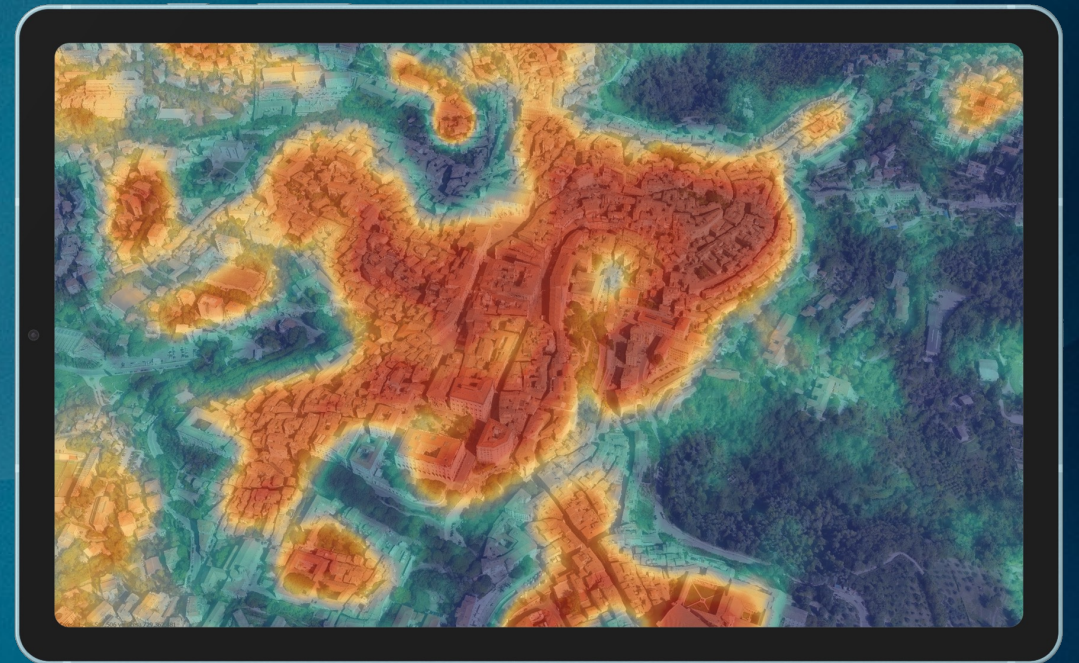


•R&D project

## EVOLUTION

- Project objective: mitigation of urban heat islands (UHI), reduction of atmospheric pollutants, and decarbonization
- Use of advanced urban simulation algorithms validated in the following Italian pilot cities: Naples, Catania, Parma and
- Perugia.

Research project led by the R&D Department of WiseTown, Latitudo, University of Parma, University of Perugia.





•stories



## OBJECTIVE

Providing the city with a tool in order for public authorities to manage a massive event with a limited number of staff

## HOW

Using the Situation Room module to collect data from different sources (e.g. IoT, web, social media)

Exploit the digital twin paradigm to visualize on a map aggregated and real time data related to the ongoing situation

Giving a solution which facilitates a quick implementation of operational decisions



•stories



## OBJECTIVE

Improve urban security management  
identifying perceived insecurity and building  
solidarity mechanisms in the community

## HOW

Providing citizens with an app to report  
threatening situations or suspicious behavior to  
security officials

Attaching information about the type of a critical  
issue and the location of the report to enable  
immediate action by security officers

Providing safety managers with an analysis tool  
in order to identify problems and provide  
solutions



.customers

# Customers



Comune di Perugia



Regione Umbria



eurochocolate  
International Chocolate Exhibition



Comune di  
Narni



Comune di  
San Fermo della Battaglia



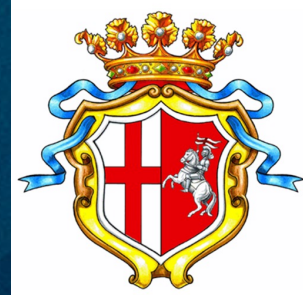
Comune di  
Calcinato



Comune di  
Todi



Comune di  
Monte Castello di Vibio



Comune di  
Spoleto



.partners



# Our Partners






.contacts



 marketing@teamdev.it

 <https://wise.town>

 WiseTown

 WiseTownSolution

 WiseTownProject